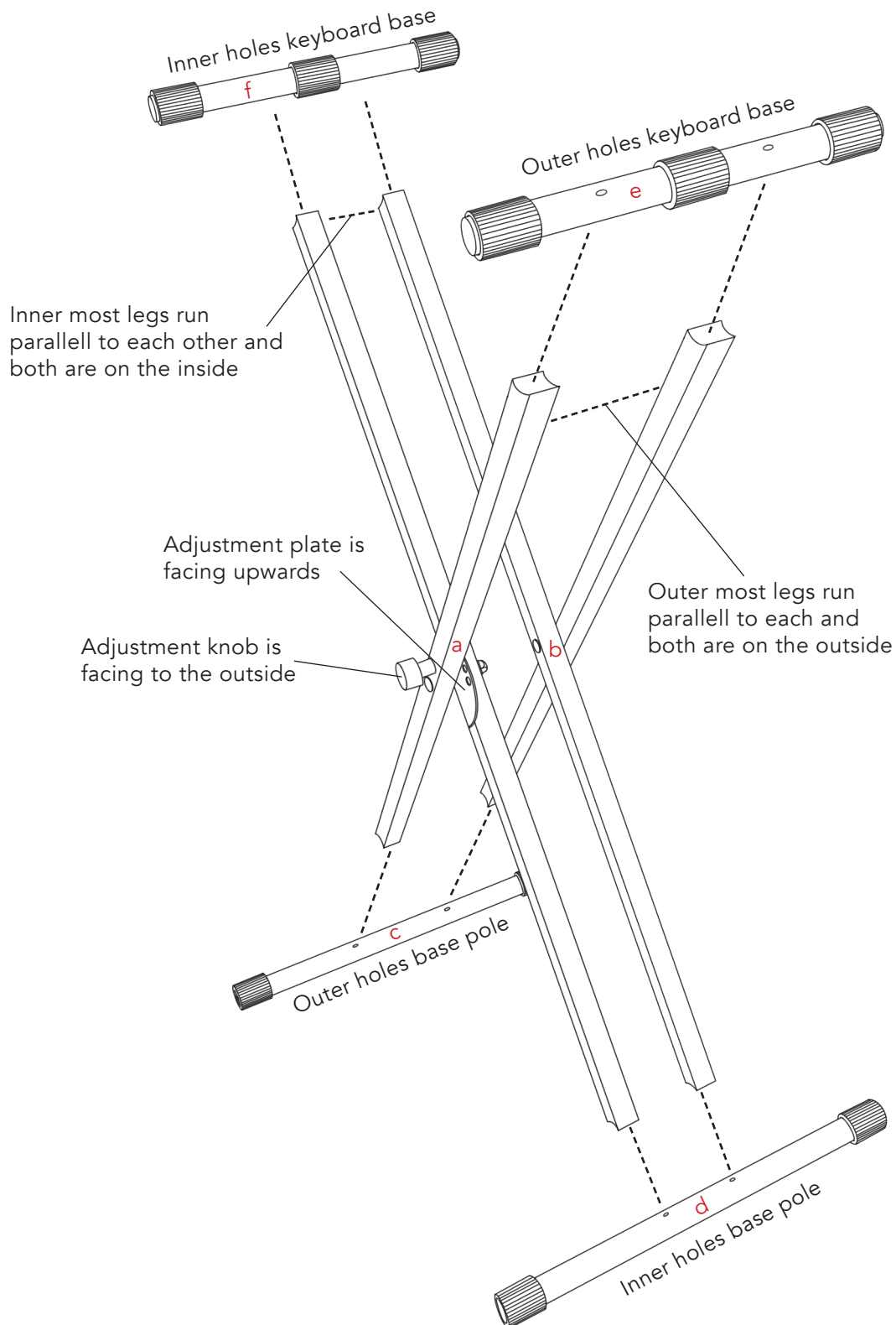


HOW TO ASSEMBLE YOUR KEYBOARD STAND

In the box, you should have the following:

- 1 x X-brace keyboard Legs with adjustment plate (a)
- 1 x X-brace keyboard Legs without adjustment plate (b)
- 1 x Pair of base poles (1x with wide holes [outer] (c) and 1x with narrow holes [inner] (d))
- 1 x Pair of keyboard base (1x with wide holes [outer] (e) and 1x with narrow holes [inner] (f))
- 8 x Screws
- 1 x Allen key



STEP ONE

Grab both sets of the X-brace keyboard legs (a & b).

Ensure that the legs running parallel to each other are both facing the inside and the other legs are facing outside. (see Figure 1)

The X-brace legs that have the adjustment plate, must have the adjust knob facing the outside and the half-circle adjustment plate must be facing upwards. (See Figure 2)

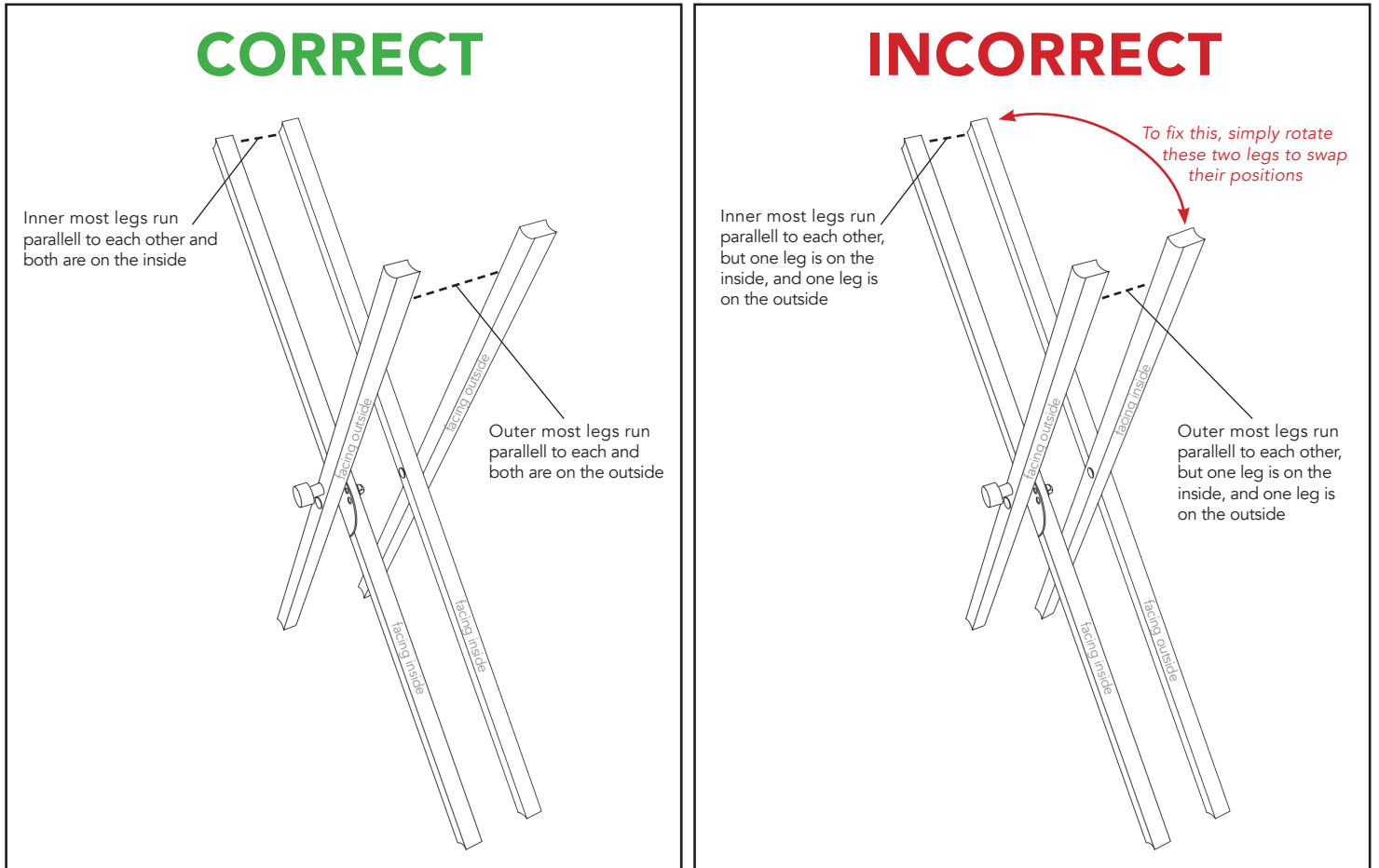


Figure 1

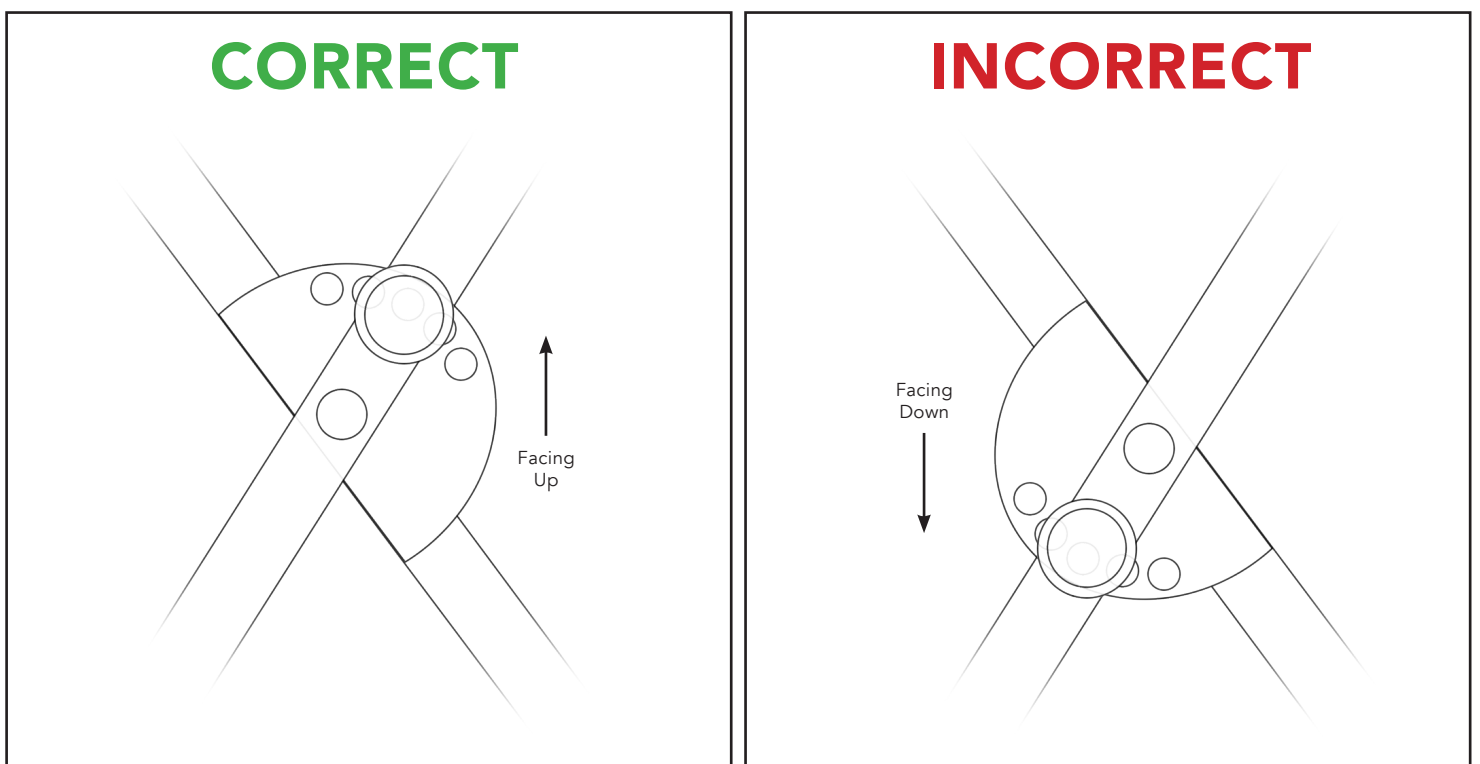


Figure 2

STEP TWO

Grab both base poles (c & d). These go on the bottom of the stand.

One will have pre-drilled screw holes that are closer together than the other base pole. Align each one correctly to the X-brace legs. (See Figure 3)

Using the provided screws & allen key, screw the X-brace legs to the base poles.

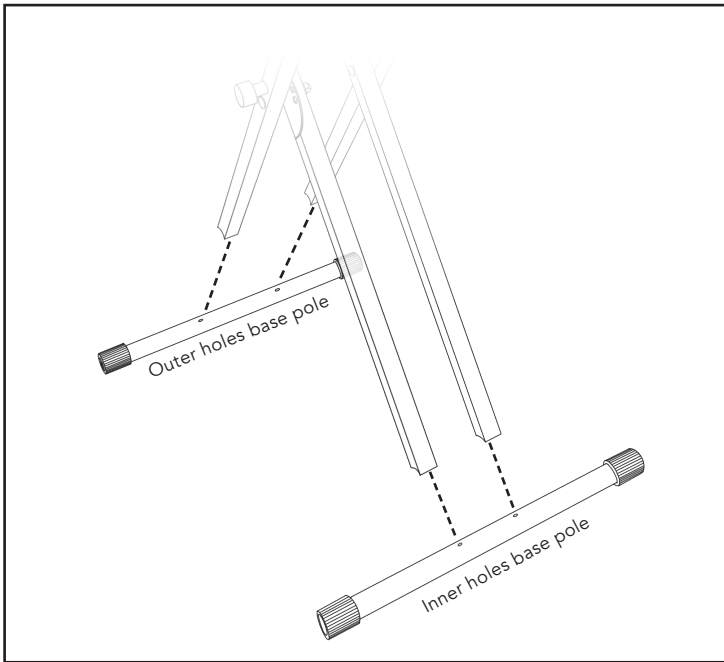


Figure 3

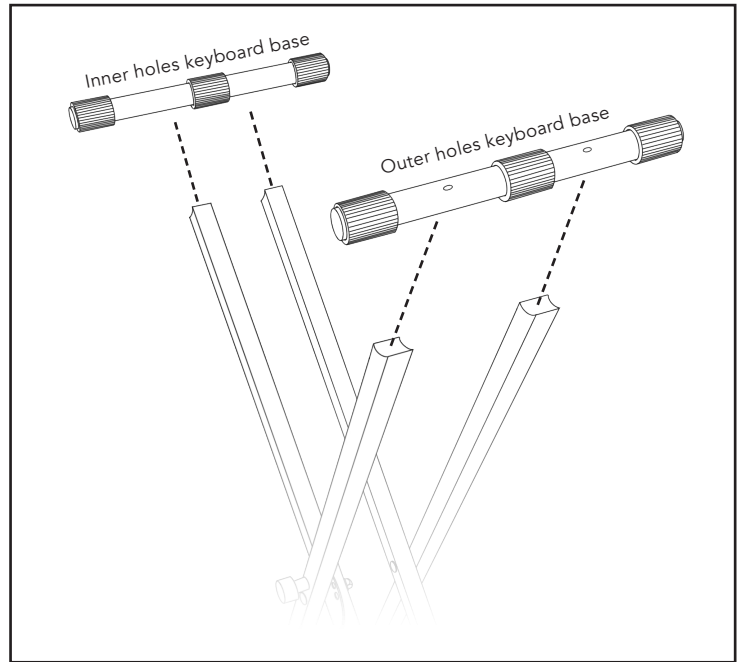


Figure 4

STEP THREE

Grab both keyboard bases (e & f). These go on the top of the stand.

One will have pre-drilled screw holes that are closer together than the other base pole. Align each one correctly to the X-brace legs. (See Figure 4)

Using the provided screws & allen key, screw the X-brace legs to the keyboard bases.

Your stand should now be complete and look like this:

